

## JimmyStream V 1.1

### What is JimmyStream

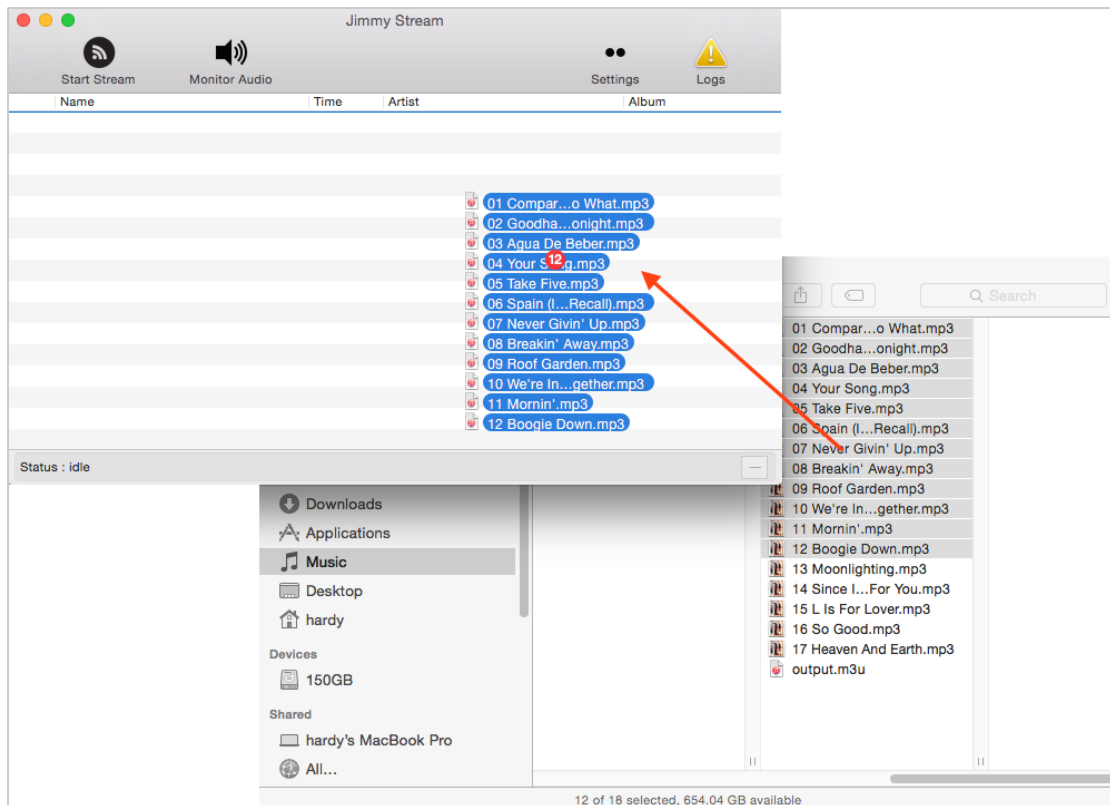
JimmyStream (JS), is a software that can help you create an internet radio on your Mac OS X. You can quite easily broadcast live audio on the internet.

### Installation

1. Download and unzip the file
2. Place the application on Application folder
3. Run the application



This is default playlist manager and control panel of JS when first run. Open Finder and drag your MP3 files on to it.

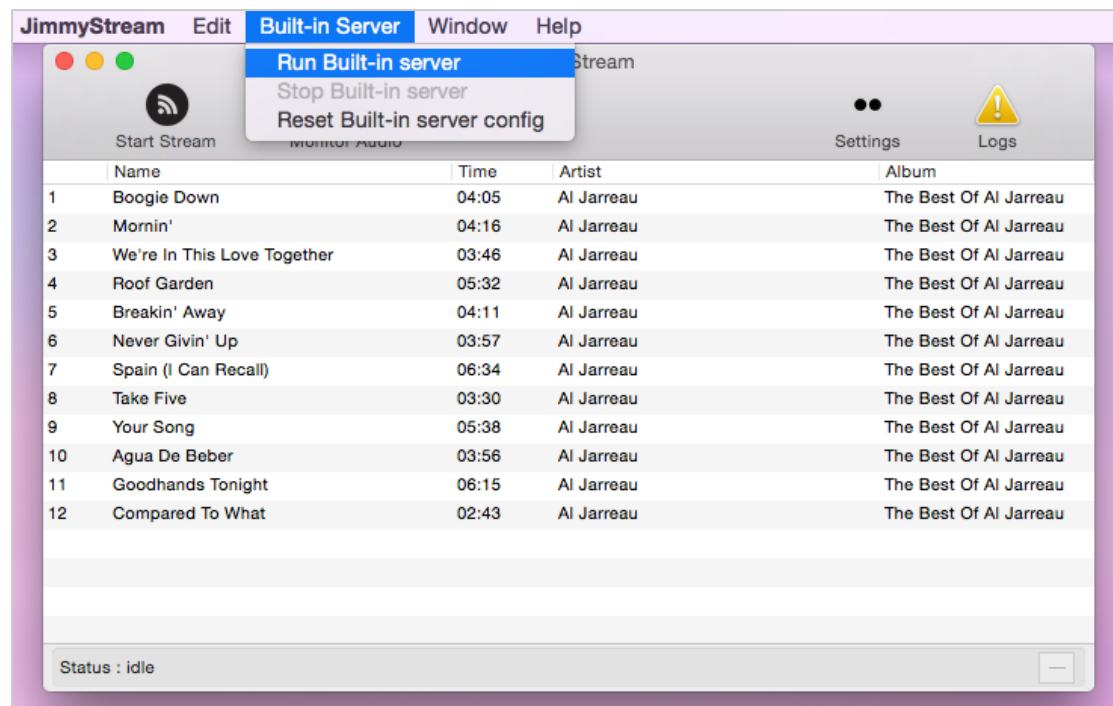


Now your playlist manager contain MP3 files.

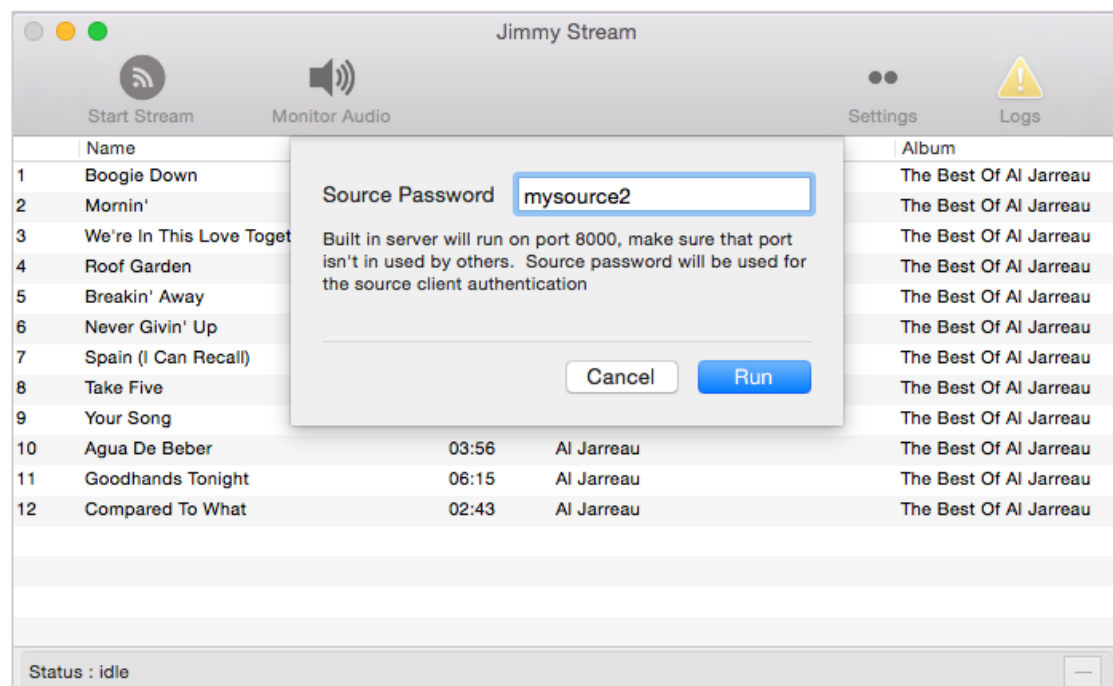


You can add more MP3 files, delete multiple selection and reorder the position.

On JS's menu, click "Built-in Server" then select and click "Run Built-in server".



A dialog will appear and ask you to fill in the source password

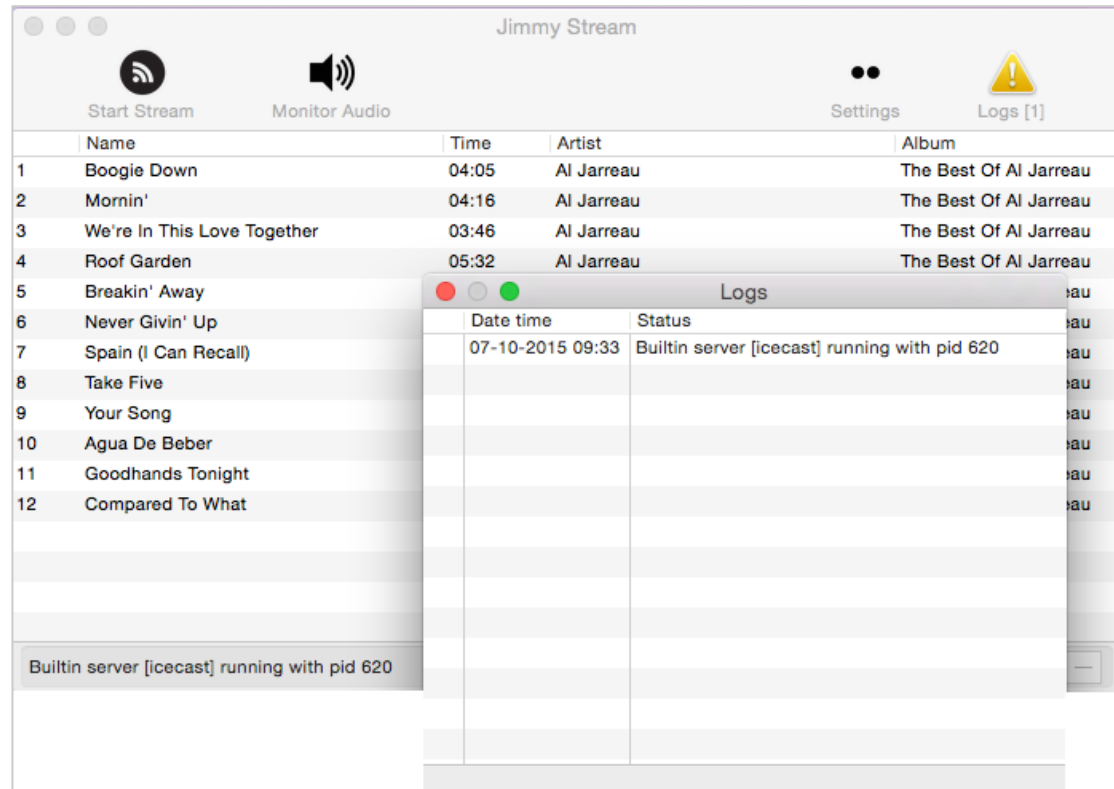


Source password must be more than 5 characters and cannot contain spaces or any unreadable character. What is source password ? source password is the unencrypted password used by sources (built-in playlist or any other sources) to connect to built-in server.

For your information, JS can be used as :

1. Server only
2. Source only and stream the content to any Icecast server
3. Both

When you done with source password, click “Run” button . Server will run on port 8000 (so make sure this port isn’t in used by others). You can check the server status by click “Logs” button.



Close the Log window, and back to playlist manager, click “Settings Button”, and a dialog window will appear.

We will run the server and the source client in same machine, then fill the form like this

Name	Album
1 Boogie Down	The Best Of Al Jarreau
2 Mornin'	The Best Of Al Jarreau
3 We're In This Love Toge	The Best Of Al Jarreau
4 Roof Garden	The Best Of Al Jarreau
5 Breakin' Away	The Best Of Al Jarreau
6 Never Givin' Up	The Best Of Al Jarreau
7 Spain (I Can Recall)	The Best Of Al Jarreau
8 Take Five	The Best Of Al Jarreau
9 Your Song	The Best Of Al Jarreau
10 Agua De Beber	The Best Of Al Jarreau
11 Goodhands Tonight	The Best Of Al Jarreau
12 Compared To What	The Best Of Al Jarreau

Builtin server [icecast] running

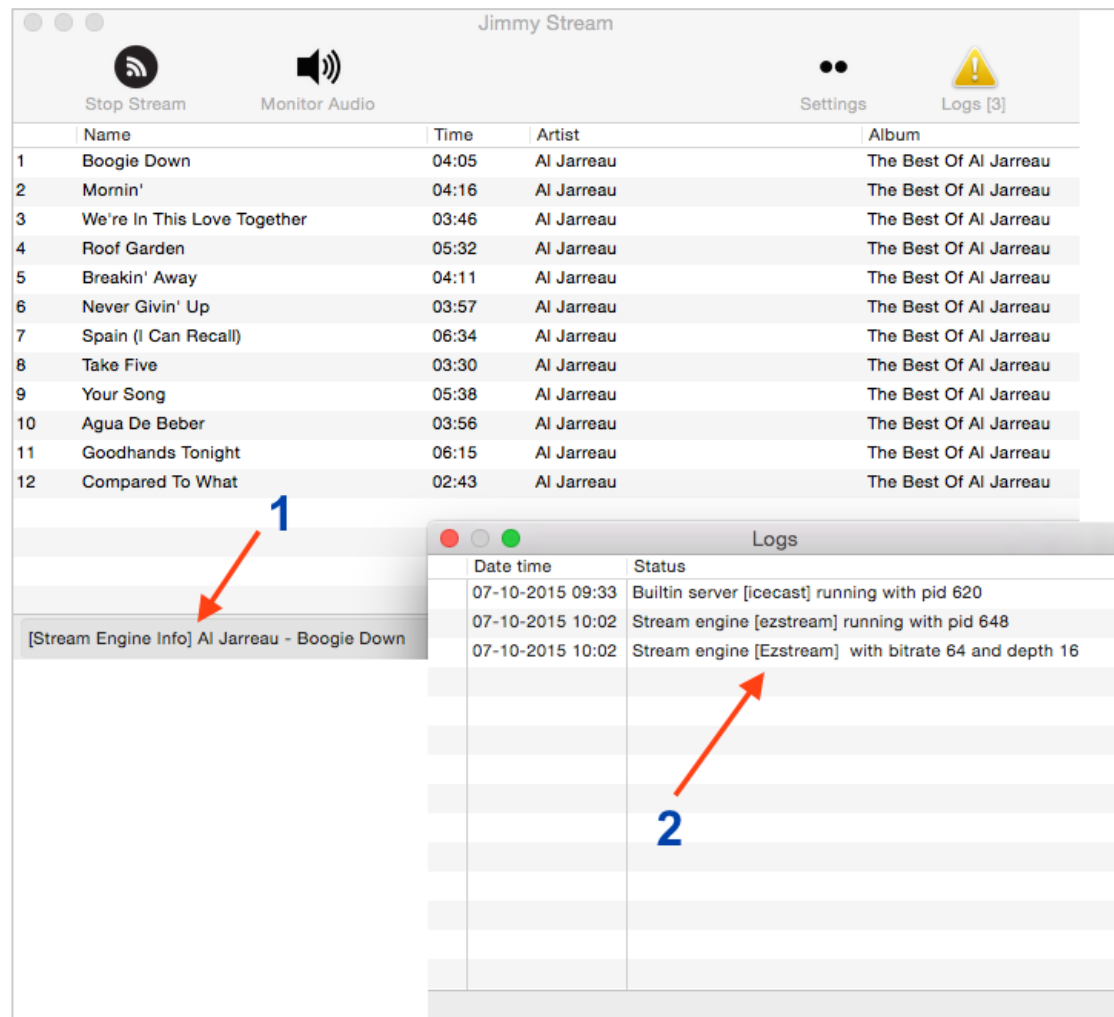
On “Authentication section”, fill “Server Address” with “http://localhost:8000/” (without quote), server address actually is a mount point of JS’s built-in server, leave blank for “Source username” and fill “Source Password” with the password which you’ve created when run built-in server.

You can fill in “General information” with appropriate information. By default, JS will stream in loop mode infinitely , if you want stream stop after the last song then thick-select “Terminate when finish with last MP3”.

By default, JS will stream MP3 as is without down sampling, but JS can re-encode the bitrate to fit your needs.

When choosing a bitrate for your stream, it is worth understanding how Mp3 bitrate's work so you can make an informed choice on which bitrate to use. In short, MP3 compression removes parts of the sound in an audio file that are not usually heard by the human ear. By removing these sections of data the file size will become smaller. An MP3's bitrate determines the amount of data the file may use per second of audio. This basically means that when an MP3's uses a lower bitrate it has less data being transferred per second of audio. Therefore the file size will become smaller and the subsequent quality of the audio will also be much lower. The lower the bit rate you choose the less data you’ll use. To achieve CD-quality audio on your stream, 128 kbps is recommended. For AM audio like, the recommended minimum is 32 kbps. Make sure your bandwidth can support your streaming bitrate.

When you finish with configuration, click “Save” button, then follow by clicking “Start Stream”. Open the logs window.



If everything ok, you will see current stream on number 1 and status log in number 2.

You can listen or monitor your radio stream in same machine by click “Monitor Audio”, or with any radio/media player likes iTunes and other.

If you run over LAN then anybody can listen your stream media by using any radio player, the url address of your radio is your IP Address and server port, for example <http://192.168.1.200:8000/>

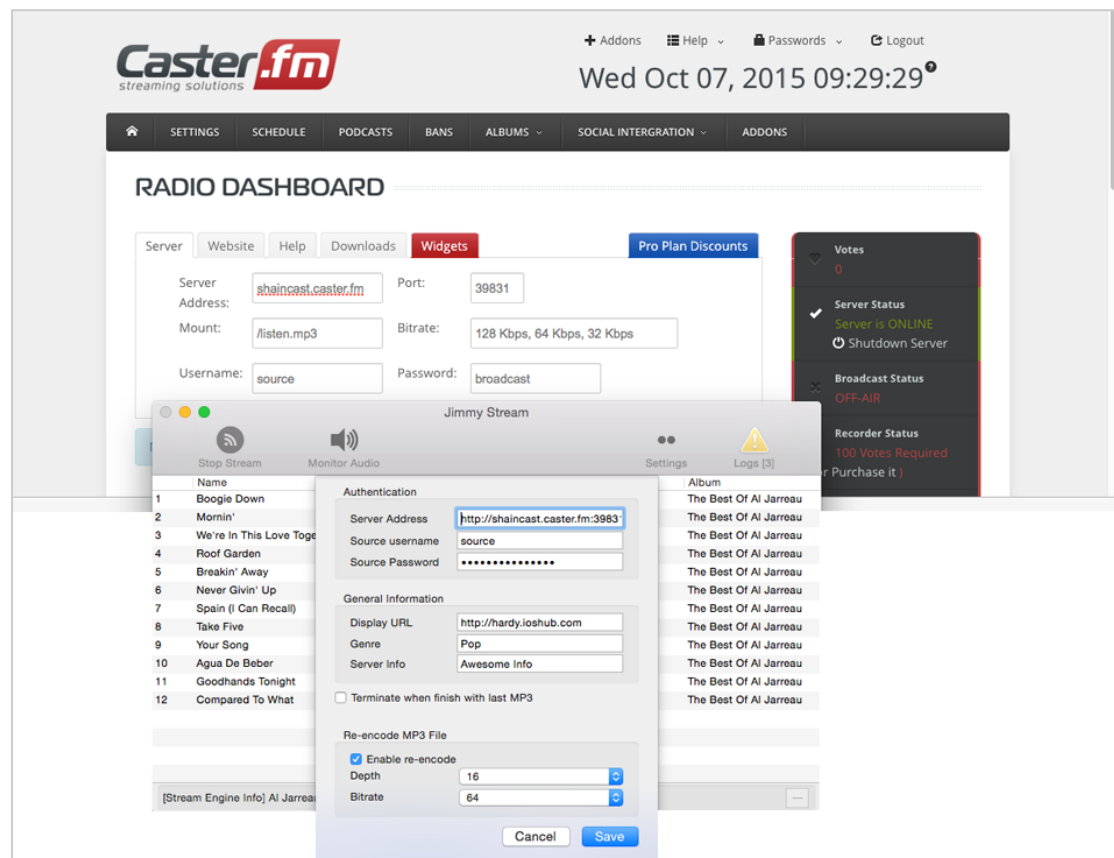
Broadcasting over internet to public take a bit of network configuration, for example, you can broadcast behind router. When the broadcasting computer is in a LAN environment it is usually part of a network of computers that connect to the Internet through a device called a router, The router (also called a Gateway) helps route Internet traffic to and from the outside, allowing or disallowing connections. A router is used so that many computers can use one access point to interact with the Internet and also for security purposes such as to prevent hacking. In order for Radio Broadcaster to work, the network administrator (or

whoever is familiar and authorized to configure the router) must allow access from outside listeners to hear the live broadcast from the your JS behind the router. When listeners successfully connect to a JS broadcasting from behind a router, their request is being forwarded by the router to the JS.

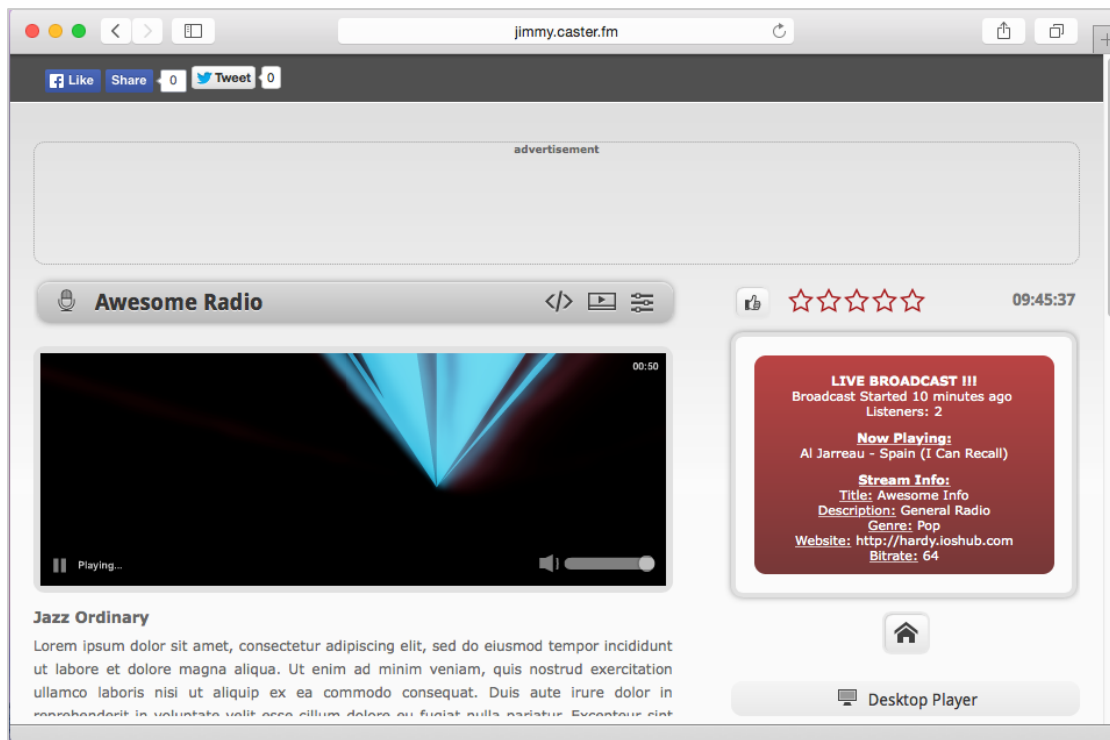
### Running JimmyStream as Source client only

JS can act as source client only and stream the playlist to any Icecast server wherever it is. For example, JS will stream to Caster.fm

Stop the stream (if its run) by clicking “Stop Stream” button, Stop the built-in server (optional), click “Settings” button. Fill in the configuration.



“Server Address” should be match with your Caster FM credential information, which are a combination of server address, port and mount point , for example, “http://shaincast.caster.fm:39831/listen.mp3” . “Source username and password are source username and password from Caster FM which are gave to you from Caster Fm’s as seen in Radio Dashboard. If everything are ok, click “Start Stream” button. Open Web browser and point to your radio url (which also given by CasterFm when registration) . you will see



That's all for now. Sorry for my poor english ☺